

e-Prescribing

Measure Details

Measure Description: At least one permissible prescription written by the MIPS eligible clinician is transmitted electronically using CEHRT.

Numerator: The number of prescriptions in the denominator generated and transmitted electronically using CEHRT.

Denominator: Number of prescriptions written for drugs requiring a prescription in order to be dispensed other than controlled substances during the performance period; or number of prescriptions written for drugs requiring a prescription in order to be dispensed during the performance period.

Scoring Information

- Required for PI Performance Category Score: **Yes**
- Measure Score: Up to 10 points
- Eligible Bonus: No

Exclusions: Any MIPS eligible clinician who writes fewer than 100 permissible prescriptions during the performance period.

Definitions

Prescription: The authorization by a MIPS eligible clinician to a pharmacist to dispense a drug that the pharmacist would not dispense to the patient without such authorization.

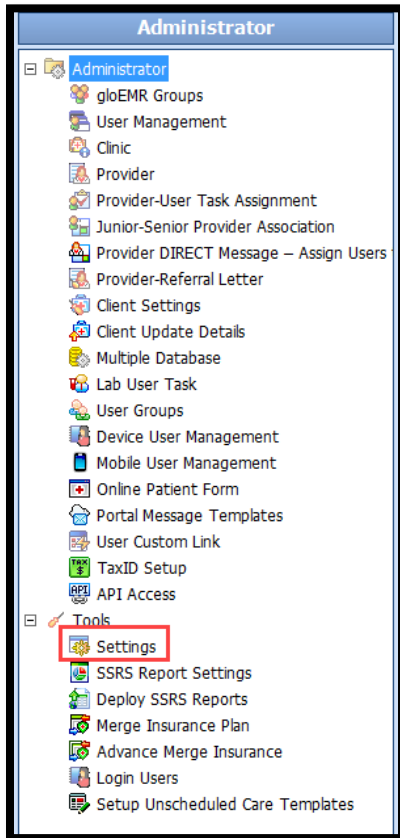
Permissible Prescriptions: All drugs meeting the current definition of a prescription as the authorization by a clinician to dispense a drug that would not be dispensed without such authorization and may include electronic prescriptions of controlled substances where creation of an electronic prescription for the medication is feasible using CEHRT and where allowable by state and local law.

Set Up

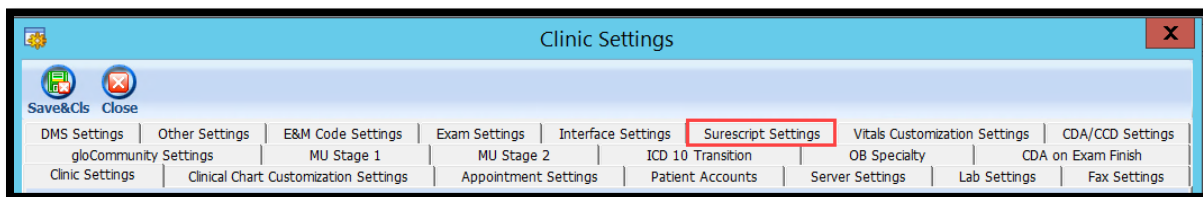
Enable Drug Formulary:

1. Open **QEMR Admin**

2. Click **Settings** from left side bar

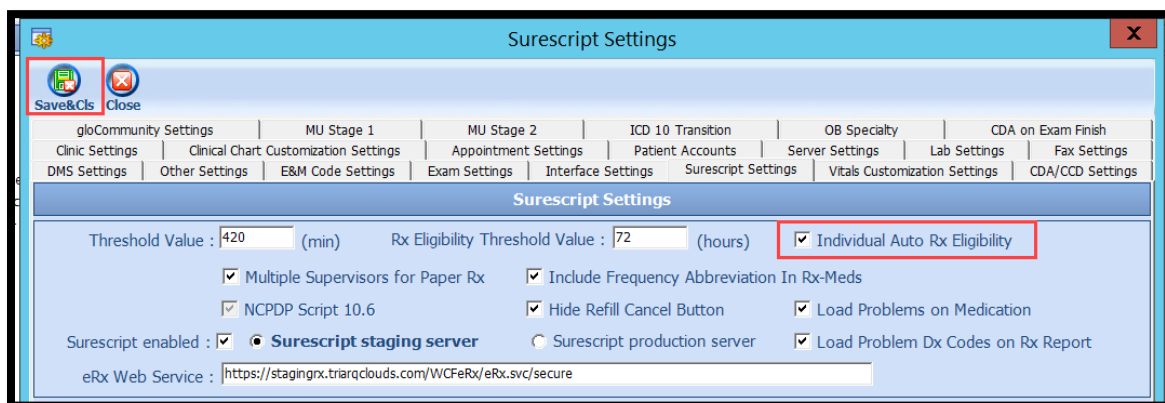


3. Click **Surescript Settings** tab



4. Enable checkbox '**Individual Auto Rx Eligibility**'

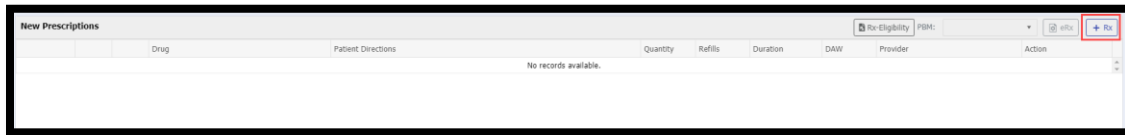
a. Click **Save & Close** hot button



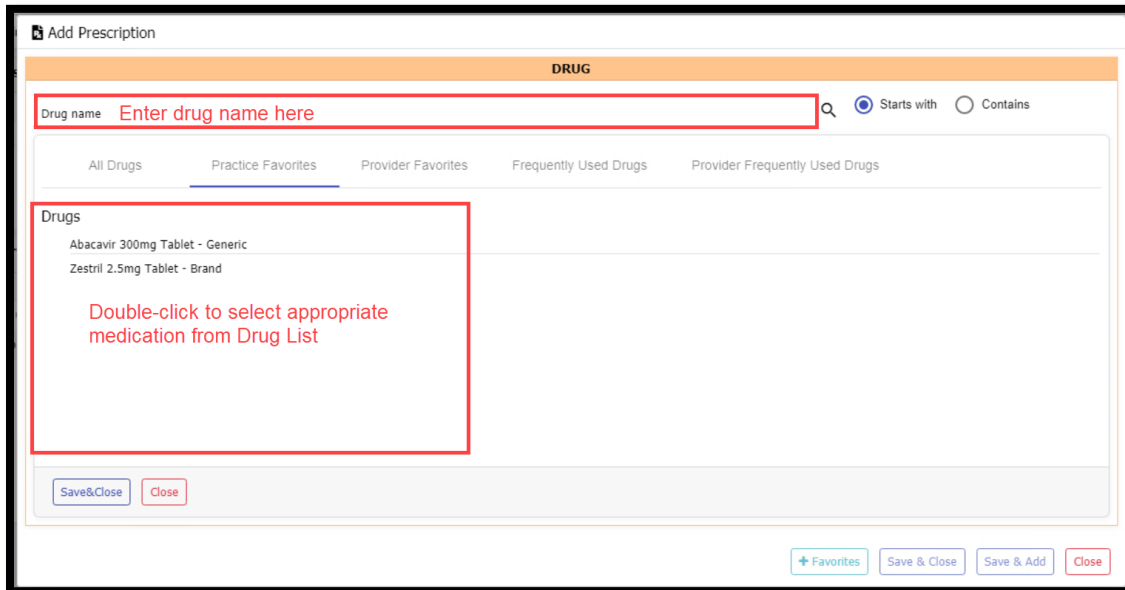
Workflow

Prescribing Instructions

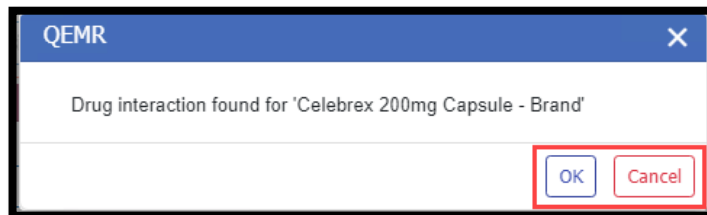
1. Open **RxMed** Module
2. Click + Rx button in New Prescriptions section



3. Search for medication using Drug Name search bar
4. Double click appropriate medication



5. Drug Interaction Alert (if found) 2 options
 - a. Click **OK** to view interaction
 - b. Click **Cancel** to not view



6. Complete Script Pad with appropriate prescribing details
 - a. Ensure **Pharmacy Name and Address** field are correct
 - b. **Issue Method** must be set to **eRx**
 - c. Click **Save & Close** button

7. Click **eRx** button in New Prescriptions section

8. Review Summary Screen for Accuracy
 - a. If Rx needs modification click **Modify Rx** icon is prescription needs editing
 - b. Make modification to 'Script Pad'
 - c. Click **Save & Close** Button

9. **Send** button after reviewing Summary Screen for accuracy

10. Click **Close** button in eRx Response section

